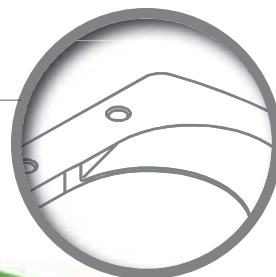




**LOCKING PIN**  
Enables a secure head closing.







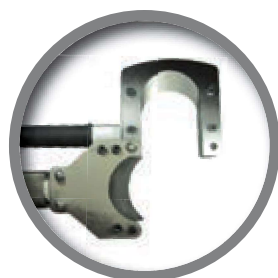
## NEOELEC™ BCP085G

HYDRAULIC CUTTING TOOL  
PISTOL GUILLOTINE TYPE

18V  
4Ah

> Identical force, stroke and capacities as the CG85 & XCG85.

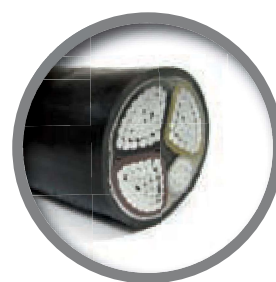
-  **NEW COUNTER BLADE**  
Decreases cable distortion when cutting.
-  **SHARP BLADE & COUNTER BLADE**  
Improve the cable cutting (> copper and aluminum cables).
-  **ERGONOMIC HANDLE**  
Easy to care and for a secured tool handling.
-  **ROTATIVE HEAD**  
180°



**WIDE OPENING**  
Easy for cables passage.

**TYPE OF CABLES**  
copper and aluminum

**MAX. PASSAGE**  
Ø 85 mm



<b>FORCE</b>	55 kN
<b>CUTTING TIME</b>	8 to 20 s
<b>CUTTING CAPACITY</b> – DEPENDS ON MATERIALS	
<b>DIMENSIONS</b> (L x l x h in mm)	580 x 85 x 340
<b>WEIGHT</b> (with battery)	8.900 kg

<b>DIMENSIONS</b> (mm)	594 x 494 x 149
<b>WEIGHT</b>	3.660 kg

> Case and charger delivered with the tool.  
> **NEOELEC™** accessories  
Refer to **PAGE 56 – 57**.



### MAX. CUTTING CAPACITIES

TYPE OF CABLES	MAX. Ø OF CUT *
<b>UNDERGROUND INSULATED ALUMINUM CABLES</b>	3 x 240 mm <sup>2</sup> + 1 x 95 mm <sup>2</sup> 1 x 630 mm <sup>2</sup> > 800 mm <sup>2</sup>
<b>COPPER CABLES</b>	630 mm <sup>2</sup>
<b>TELEPHONE CABLES</b>	Ø 85 mm

\* Other dimensions and cables to be approved with tests.



Do not use this tool on live cables.

 **KW Hydraulik**  
Aggregate und Werkzeuge

www.kw-hydraulik.de info@kw-hydraulik.de +49 3675 421 980