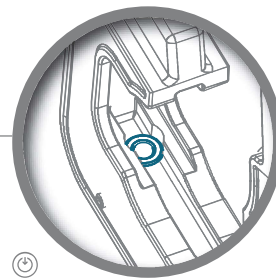


QUICK OPENING & CLOSING HEAD
Easy to replace die sets.

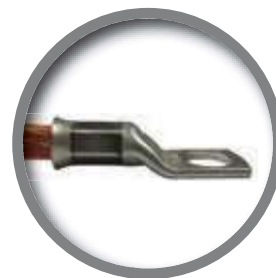


D51

MANUAL HYDRAULIC CRIMPING TOOL

> Identical force, stroke and capacities as the **XD51** and the battery operated tools **BPE055** & **BPL055**.

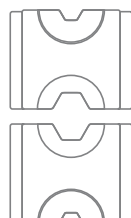
HEXAGONAL CRIMPING
4 > 240 mm²



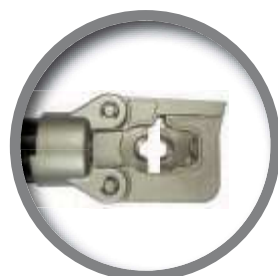
BALL HEAD DOWEL
Enables setting of 38 mm width die (manufactured by DUBUIS) or 30 mm (manufactured by other companies).



INTERCHANGEABLE DIE SETS
Simple or reversible.



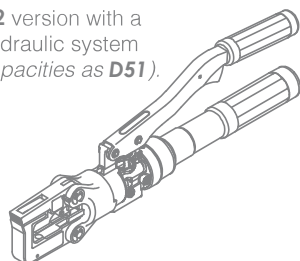
Die sets
4 > 240 mm²



DIE SETS – Refer to **PAGES 88 – 96**.

> Common interchangeable die sets for **D51, XD51, BPE055** & **BPL055**.

> Exists in **D52** version with a 2 speeds hydraulic system (identical capacities as **D51**).



| | |
|-------------------------------------|----------------|
| STROKE | 13 mm |
| FORCE | 55 kN |
| DIMENSIONS (L x l x h in mm) | 380 x 65 x 140 |
| WEIGHT | 2.280 kg |

| APPLICATIONS | SECTIONS |
|---|--------------------------|
| Copper lugs and sleeves – NFC 20-130 | 4 > 240 mm ² |
| Bare or insulated sleeves in copper or alu – EDF E54 > E215 | |
| Copper or alu lugs and sleeves – DIN 48083 | KZ6 > KZ32 |
| C-shaped connectors | C6 > C35 |
| Pre-rounding die sets | 6 > 240 mm ² |
| Copper lugs and sleeves – NFC 20-130 | 10 > 120 mm ² |



| | |
|------------------------|----------------|
| DIMENSIONS (mm) | 490 x 302 x 90 |
| WEIGHT | 1,300 kg |

> Tray for 12 die sets.
> Delivered separately.



www.kw-hydraulik.de info@kw-hydraulik.de +49 3675 421 980