

## HPC-N209W & WDF

### OGURA Elektro- & Akku-hydraulische Lochstanze

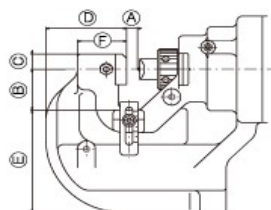
### OGURA Electric & Battery-Hydraulic Hole Puncher

High-End-Modell in unserer neu entwickelten Reihe von doppelwirkenden Stanzen.

High-end model in our newly designed range of double acting punchers.

- Doppelwirkende Hydraulik für schnelles Stanzen und kraftvollen Rückzug.
- Leicht zu Positionieren dank speziellem Mechanismus.
- Verstärkter Kopf gegenüber N208  
→ dickere Materialstärke  
T<sub>max</sub> = 9 mm (N208 = 8 mm)
- Max. Lochgröße / Materialstärke:  
Ø20mm / t9mm (Baustahl)
- HPC-N209WDF-M18V  
75 W / MAKITA 18 Volt Lithium Akku
- HPC-N209W-230V  
1050 W

- Double-acting hydraulics for fast punching and powerful retraction.
- Easy to position thanks to a special mechanism.
- Reinforced head compared to N208  
→ stronger material thickness  
T<sub>max</sub> = 9 mm (N208 = 8 mm)
- Max. hole size / material thickness:  
Ø20mm / t9mm (MILD STEEL)
- HPC-N209WDF-M18V  
75 W / MAKITA 18 Volt Lithium battery
- HPC-N209W-230V  
1050 W

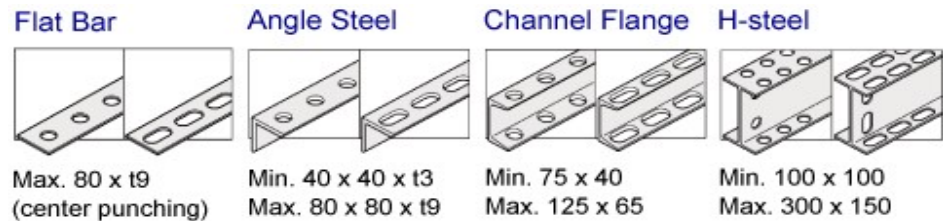


- A: 1 0 mm
- B: 4 0 mm
- C: 1 5 mm
- D: 7 2.5 mm
- E: 1 0 0 mm
- F: 4 4 mm



Typ Type	Max. Ø Max. Ø mm	Mat.-stärke Mat.-thickness mm	Ausladung Throat depth mm	Abmessung Dimension mm	Gewicht Weight kg
HPC-N209-N-WDF-18V	20	9	40	430x127xH315	11,3
HPC-N209-W-230V	20	9	40	529x127xH315	11,3

## HPC-N209W & WDF



### Rundloch-Stempel und Matrizen Round punch and die

Ø	Stempel	Matrize	Materialstärke Baustahl	Materialstärke Profilflansch	Materialstärke Edelstahl
Ø	Punch	Die	Material thickness Mild steel	Material thickness Channel Flange	Material thickness Stainless steel
6	5340040	5332510N	T4	---	T4
6,5	5340050	5332530N	T6	---	T4
8	5340060	5332550N	T6	---	T4
8,5	5340070	5332570N	T6	---	T4
10	5340080	5332590N	T6	T8	T4
11	5340090	5332610N	T9	T8	T6
12	5340100	5332630N	T9	T8	T6
13	5340110	5332650N	T9	T8	T6
14	5340120	5332670N	T9	T8	T6
15	5340130	5332690N	T9	T8	T6
16	5340140	5332710N	T9	T8	T6
18	5340150	5332730N	T9	T8	T6
19	5340170	5332740N	T9	T8	T6
20	5340160	5352510N	T9	T8	T6

### Ovalloch-Stempel und Matrizen Oblong punch and die

Ø	Stempel	Matrize	Materialstärke Baustahl	Materialstärke Aluminium/Kupfer	Materialstärke Edelstahl
Ø	Punch	Die	Material thickness Mild steel	Material thickness Aluminum/Copper	Material thickness Stainless steel
6,5x10	5340200	5332010N	T6	---	T4
6,5x13	5340210	5332030N	T6	---	T4
8,5x13	5340220	5332050N	T6	---	T4
8,5x17	5340230	5332070N	T6	---	T4
9x13,5	5340240	5332090N	T6	---	T4
9x18	5340250	5332110N	T6	---	T4
10x15	5340260	5332130N	T8	T8	T6
10x20	5340270	5332150N	T8	T8	T6
11x16,5	5340280	5332170N	T9	T8	T6
12x18	5340290	5332190N	T9	T8	T6
13x19,5	5340300	5332210N	T9	T8	T6
14x21	5340310	5332230N	T9	T8	T6